



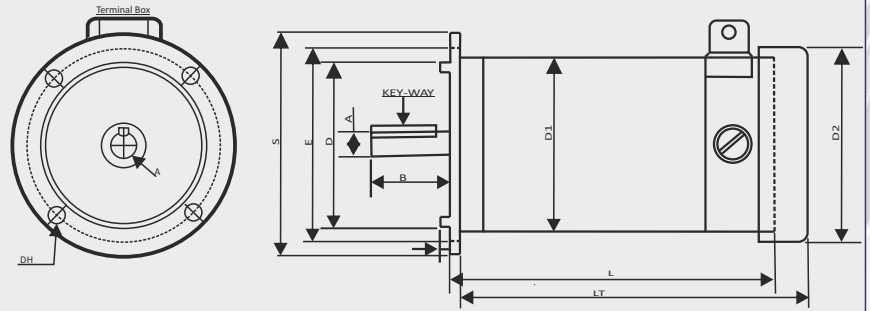
54, Annapurna Industrial Estate, Tilak Road,
Ghatkopar (E), Mumbai - 400 077 India
Tel: +91-22-21029911
E-mail: sales@excellaelectronics.com

PMDC MOTOR D90 SERIES

Mechanical Dimension



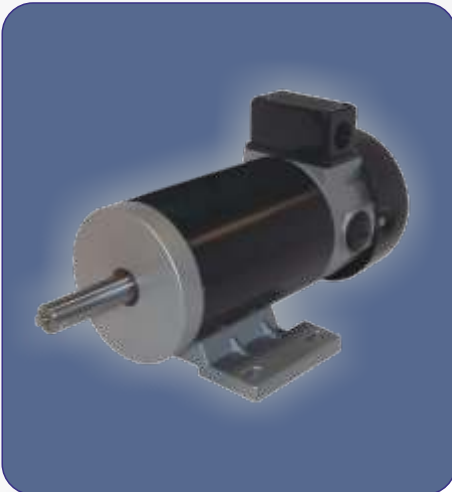
Flange Mounting



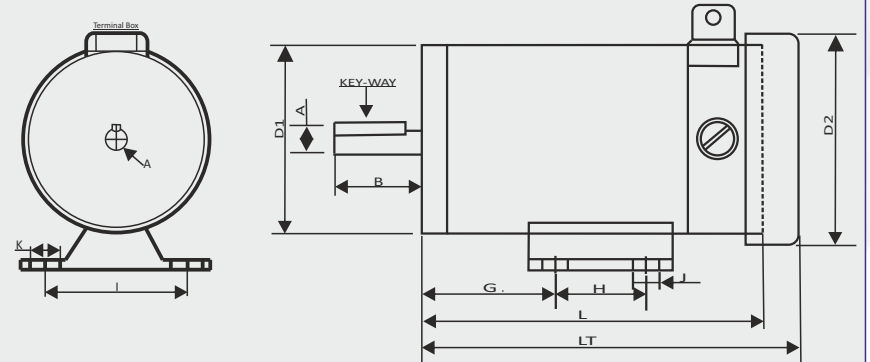
MECHANICAL DIMENSIONS FOR FLANGE MOUNTING MOTORS.

D1	FRAME	A	B	D	S	E	F	DH	KEYWAY
90	63 FR	11	23	95	140	115	3	10	20X4X2D

Mechanical Dimension



Foot Mounting



MECHANICAL DIMENSIONS FOR FOOT MOUNTING MOTORS.

D1	FRAME	A	B	C	G	H	I	J	K	KEYWAY
90	90 FT	15.85	52	67	53	61	95	15	9	42X5X3D

Technical Specification

POWER IN WATTS/HP	SPEED IN RPM		VOLTAGE IN VDC			CURR. IN AMPS			TORQUE IN KG-CM		INSL. CLASS	DUTY CYCLE	PROTECTION	ENCL.	MOUNTING	FRAME	D2	LT TEFC	WEIGHT (KG)
	S1	S2	V1	V2	V3	A1	A2	A3	T1	T2									
100/0.13	1500	3000	180	24	12	0.7	5.2	10.4	6.6	3.3	B	S1	IP 44	TEFC	FOOT	90FT	106	212	5.8
100/0.13	1500	3000	180	24	12	0.7	5.2	10.4	6.6	3.3	B	S1	IP 44	TEFC	FLANGE	63FR	106	216	
120/0.16	1500	3000	180	24	12	0.8	6.2	12.5	8.0	4.0	B	S1	IP 44	TEFC	FOOT	90FT	106	212	
120/0.16	1500	3000	180	24	12	0.8	6.2	12.5	8.0	4.0	B	S1	IP 44	TEFC	FLANGE	63FR	106	216	
150/0.20	1500	3000	180	24	12	1.0	7.8	15.6	10.0	5.0	B	S1	IP 44	TEFC	FOOT	90FT	106	212	
150/0.20	1500	3000	180	24	12	1.0	7.8	15.6	10.0	5.0	B	S1	IP 44	TEFC	FLANGE	63FR	106	216	

NOTE: THE ABOVE MOTOR CAN BE GIVEN IN FOOT OR FLANGE MOUNTING INCASE FOOT CUM FLANGE IS REQUIRED CHARGES EXTRA WILL BE CHARGED.